

THE CLARK ART INSTITUTE

Clockwise from left, Monet's: Study of a Figure Outdoors: Woman With a Sunshade Turned to the Right; The Needle and the Porte d'Aval; one of the Haystacks series; Grand Canal, Venice

# LASTING IMPRESSIONS

The art world is recognising the 100th anniversary of Claude Monet's death

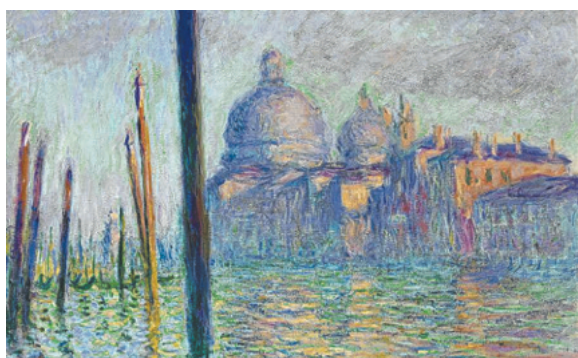
JANE CORNWELL

Claude Monet, the father of Impressionism, died in the village of Giverny in Normandy, France, almost 100 years ago, on December 5, 1926. Across Paris and Normandy – the landscapes that framed his life and work – a year-long program of exhibitions and special events invites visitors to step inside his world of light, nature and the open air. From the lily ponds of Giverny to the grand museums of the capital, France is marking the centenary with rare loans, fresh perspectives and moments intended to be felt. International institutions are joining in – Tokyo, Frankfurt and Geelong are staging their own tributes – to celebrate Monet's enchanting aesthetic, and to see his work anew. Here are 10 compelling events taking place across this centenary year.

## 1 Claude Monet: Questioning Nature Artizon Museum, Tokyo, Japan Until May 24

Monet was captivated by changes of light and the fluidity of nature. Bringing together more than 140 works, including 41 of his own paintings and 90 pieces from France's Musée d'Orsay and several Japanese collections, this exhibition traces his artistic journey from the rugged coasts of Normandy to his garden at Giverny. All of which – plus a video installation by French artist Ange Leccia, set inside the Water Lilies pond – invite the viewer to muse on the beauty and fragility of nature, and its relationship to modern life.

[artizon.museum](http://artizon.museum)



MUSEUM OF FINE ARTS, BOSTON

## 2 Monet on the Normandy Coast: The Discovery of Etretat Stadel Museum, Frankfurt, Germany Until July 5

Monet was profoundly inspired by the dramatic chalk cliffs of Etretat on the Normandy coast, and between 1883 and 1886 produced more than 80 paintings of the site and its three natural rock formations. This major German exhibition brings together paintings, sketches and archival materials with works by Monet's contemporaries (Gustave Courbet, Felix Vallotton) to position Etretat as a vital artistic laboratory, a plein air playground where motifs – and perceptions – changed with the light, seasons and volatile weather. A rare insight into how a single landscape transformed Monet's practice and helped define Impressionism.

[staedelmuseum.de](http://staedelmuseum.de)

## 3 Before the Water Lilies: Monet Discovers Giverny 1883-1890 Museum of Impressionisms Giverny, France Until July 5

Monet arrived in the village of Giverny in 1883. Appreciative of the surrounding meadows and hills with their poppies and poplars, and the proximity of the banks of the Epte and the Seine, he rented then purchased a house with green shutters and pink plasterwork, and set about making the surrounds – and that glorious garden – his own. Here, in a museum that is walking distance from his home, are 30 works that explore the artist's early years in a landscape shaped by rain and mist, sunlight and shifting skies.

[mdig.fr](http://mdig.fr)

## 4 Monet and Venice de Young Museum, San Francisco, US Until July 26

Monet visited Venice later in life – a single stay from 1908 to 1909 – and painted the city not as a fixed cityscape but as a shifting interplay of water, light and architecture, where forms dissolved into an eerie, hazy glow he called the "enveloppe". His multiple variations on similar views reveal a late-career shift toward experimentation and abstraction, a transition under-

scored here by a rare concentration of more than 100 works from international collections, allowing viewers to experience the series as a cohesive whole.

[www.famsf.org](http://www.famsf.org)

## 5 Discovering the Impressionists Geelong Gallery, Geelong, Victoria, Australia June 20 to October 11

Featuring more than 70 paintings – many never seen in Australia – this blockbuster exhibition explores the rise of Impressionism through the daring vision of French art dealer Paul Durand-Ruel. When he met a broke, despondent Monet in 1870, Durand-Ruel didn't just transform one career – he backed an entire movement, championing Renoir, Berthe Morisot and Camille Pissarro among many others. Their works appear alongside those of the second generation, such as Albert Andre and Georges d'Espagnat, including decorative panels created for the dealer's Paris apartment. One of the most compelling shows ever staged outside an Australian capital city, it recasts Impressionism as a dynamic, interconnected network.

[geelonggallery.org.au](http://geelonggallery.org.au)

## 6 Monet, Painting Time Musée de l'Orangerie, Paris, France September 30 to January 25, 2027

As with many artists across the ages, Monet was fasci-

